



# RR172 Electric Firewood Bundler

## Manual





**Remove all parts from the box.**



**We start with the lower frame. It doesn't matter which side up.**

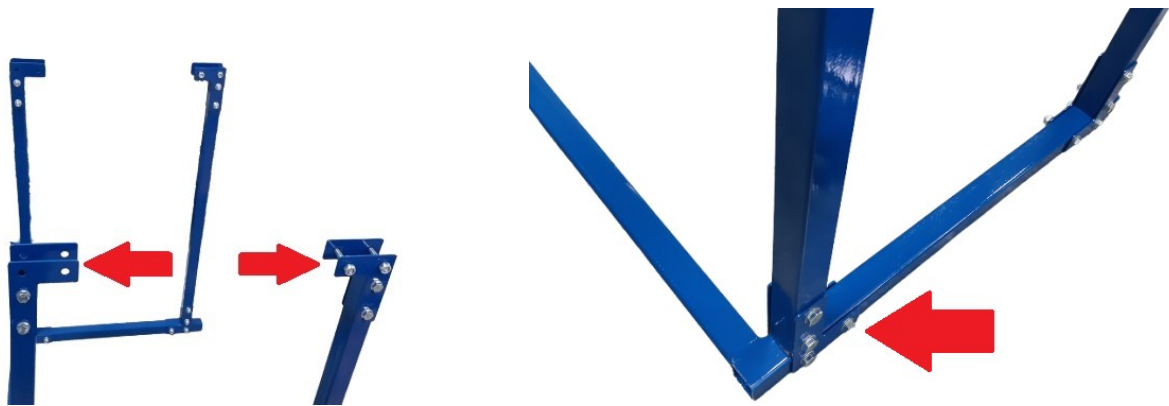




**Next, the legs. These screws must be removed. Not the two on the other side.**

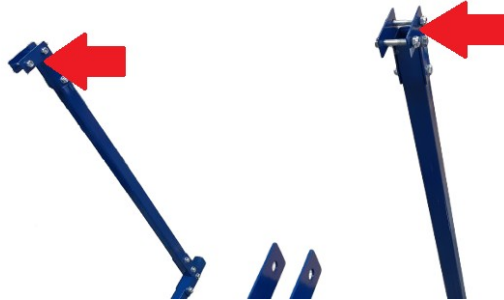


**Place all the legs on the frame so that the legs with the 2 bolts at the top are on the open part of the frame. The right angle parts on the legs point inwards towards each other. Install the screws at the lower end of the legs so that the screw heads point outwards. Leave the bolts loose.**

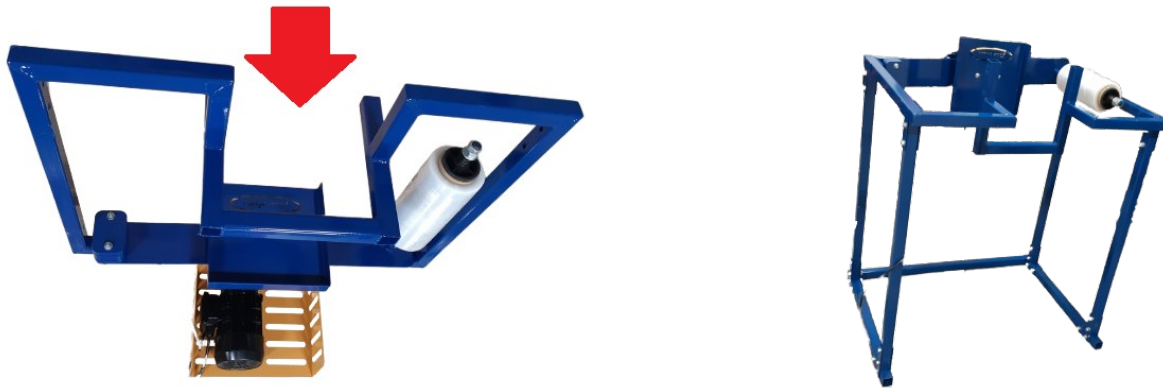




**Remove these 4 screws. They have to go back into the same place later.**



**The upper frame must be installed so that the opening marked with the arrow points upwards.**

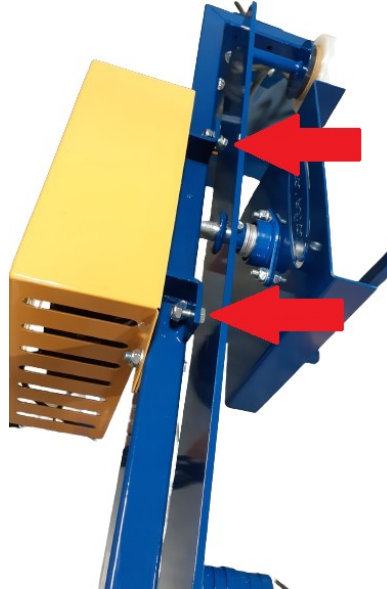


**The bolts that we previously removed from the upper end of the front legs are now used to bolt these legs to the frame.**





**Remove these two bolts on the machine.**



**Remove the bolts from the guard for the rear end of the machine. Place the guard on the machine. Install the bolts.**





**You may have to connect the machine to the power supply and turn the arm with the foil roll slightly so that you can reinstall the two screws at the rear end.**



**Now tighten all screws on the machine.**



**The machine is now ready to use.**